

## Kids Fantasy Nursery Group

### Handwash Policy

#### PURPOSE

The purpose of this policy is to ensure the continued safety & wellbeing of all Kids Fantasy Nursery Group children and staff, by all children and stakeholders be aware of the importance and adhere to the correct handwash procedures, one of the most important keys to stop spread the coronavirus. This policy is also based on the guidelines of the World Health Organization (WHO), Unicef, and the UAE Ministry of Health & Prevention (MOHAP).

This Policy must be shared with all nursery staff, parents, and key stakeholders. Educational material also should be prepared by teachers and educators to help children to understand the importance of the healthy hand.

#### POLICY STATEMENT

During the presence of COVID-19 and to avoid other viruses or bacteria contamination, handwashing is crucial to stopping the spread of the diseases. Kids Fantasy Nursery implemented handwashing protocols for all nursery staff, parents, and children.

According to the MOHAP, effective handwashing can be described as washing hands for a **minimum of 20 seconds with soap and warm water and then thoroughly drying hands afterward with a paper towel**. Cloth hand towels must not be used to dry hands as they can spread germs. Handwashing is referable to hand-sanitizer. However, in instances where soap and water are not immediately available, hand sanitizer (alcohol-based sanitizer of at least 65-90%) must be used but only for children between the ages of 2 to 4 years old. Hand sanitizer units must be wall-mounted, closely supervised, and kept out of the reach of children.

The nursery will revise and supervises continuously handwashing policies, practices, and procedures to protect and safeguard children, staff and parents must recognize the appropriateness of strategies for the relevant age-groups within the nursery. All staff is responsible for incentivizing the handwash between them and with children.

KFN will provide adequate supplies at strategic places to ensure hygiene protocols are effectively implemented including disposable paper-towels for diaper changing areas, bathrooms, classrooms; high-quality soap in all handwashing areas for children and staff; adequate supplies of tissues in all indoor and outdoor learning areas

#### When is essential to do handwashing?

- after sneezing and blowing noses, using the strategy “CATCH IT – with a tissue, BIN IT – put the tissue in the bin, and KILL IT – wash/ sanitize your hand”;
- after toileting and changing diapers;



- before and after eating;
- before and after preparing a bottle;
- between activities;
- prior to and after outdoor play;
- upon entering or prior to leaving the nursery;
- soap and paper towel dispensers are available at child height to encourage children to carry out handwashing as independently as developmentally appropriate under the supervision of an adult
- and at regular intervals throughout the day.

### **How to monitor and ensure that the handwashing protocols are being used in the daily routine?**

The WHO<sup>1</sup> emphasizes that “Evaluation and repeated monitoring of a range of indicators reflecting hand hygiene infrastructures and practices, as well as health-care workers’ and senior managers’ knowledge and perception of the problem of healthcare-associated infection and the importance of hand hygiene at the health-care facility, is a vital component of any successful hand hygiene campaign”

To monitor hand hygiene compliance Kids Fantasy Nursery will use the following strategies:

- ‘KFN hygiene assessment’ was created to track the progress in hand hygiene resources, promotion, and activities, plan the actions, and aim for improvement and sustainability through the use of the hands. It was inspired on the WHO Hand Hygiene Self-Assessment Framework<sup>2</sup>. A Framework is a tool with which to obtain a situation analysis of hand hygiene promotion and practices within an individual health-care facility, according to a set of indicators. It also acts as a diagnostic tool, identifying key issues requiring attention and improvement. Repeated use of the Framework will allow documentation of progress with time.
- The health agents will time to time monitor during the day the procedures and how the handwash and hygiene have been done by all the nursery.

### **Teaching Children in a fun manner about the importance of handwashing**

It is imperative that staff teach and model hygiene practices with children in a fun manner and any reference made to the virus is neutral rather than negative to reduce children’s anxiety surrounding the situation.

The fun manner may include songs, counting, and other ludic strategies that will help children to focus on handwash during the minimum time recommended by the health authorities.

Some websites are offering educational material to help educators to create different and properly strategies:

- [https://www.columbus.gov/uploadedFiles/Columbus/Departments/Public\\_Health/New\\_Programs/Communicable\\_Disease\\_Prevention/TeachingHandwashing\\_1.8.16.pdf](https://www.columbus.gov/uploadedFiles/Columbus/Departments/Public_Health/New_Programs/Communicable_Disease_Prevention/TeachingHandwashing_1.8.16.pdf)
- <https://www.healthforkids.co.uk/staying-healthy/washing-hands/>
- <https://livingmontessorinow.com/handwashing-activities-for-kids-free-songs-and-lessons/>

<sup>1</sup> [https://www.who.int/gpsc/5may/monitoring\\_feedback/en/](https://www.who.int/gpsc/5may/monitoring_feedback/en/)

<sup>2</sup> [https://www.who.int/gpsc/country\\_work/hhsa\\_framework\\_October\\_2010.pdf?ua=1](https://www.who.int/gpsc/country_work/hhsa_framework_October_2010.pdf?ua=1)



KFN teachers and educators must provide adequate educational material like infographics, videos, lessons during circle time, science experiments, songs and include this subject weekly in their lesson plans. Is the priority to ensure:

- that soap and paper towel dispensers are available at child height to encourage children to carry out handwashing as independently as developmentally appropriate under the supervision of an adult.
- teaching staff model and teach children how to effectively wash and dry their hands. Staff should encourage children to independently carry out effective handwashing when developmentally appropriate under the supervision of an adult.
- teaching staff washes the hands of children who are too young to wash their own hands and monitor use hand sanitizer by children aged 2 to 4 at all times.

It is imperative that staff teach and model hygiene practices with children in a fun manner and any reference made to the virus is neutral rather than negative to reduce children's anxiety surrounding the situation

### Parents

Parents must ensure that they effectively wash their hands or use hand sanitizer before dropping off or collecting their child/children from the nursery.

KFN will encourage Parents must to model and teach their child/children how to effectively wash their hands at home, give their child/children opportunities to become increasingly independent with handwashing as per developmentally appropriate under the supervision of an adult.

A serie of e-mails and other kinds of organized information will be shared with the parents. They will be encouraged to make videos of their children or other kinds of digital material that can be shared with children, showing the handwashing routine at home, for example.

### Effective Handwash

KFN staff and all stakeholders must ensure that they know and practice the effective handwash with children and themselves.

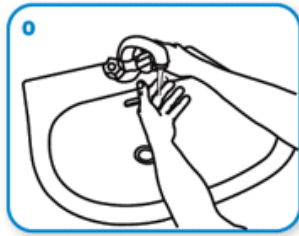
Handwashing steps that individuals must follow to ensure hands are properly disinfected:

- Step1: Wet hands with running water.
- Step 2: Apply enough soap to cover wet hands.
- Step 3: Scrub all surfaces of the hands – including backs of hands, between fingers and under nails – for **at least 20 seconds**.
- Step 4: Rinse hands thoroughly with running water.
- Step 5: Dry hands with a clean, dry cloth, single-use towel, or hand drier as available.

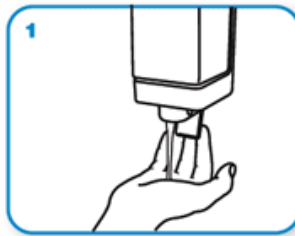
Kids Fantasy nursery will provide posters in common areas and bathrooms that outline how to effectively handwash and cover coughs and sneezes.



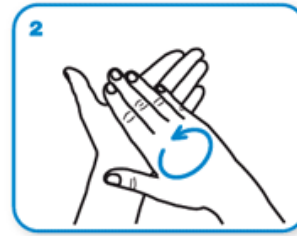
Washing your hands properly takes about as long as singing "Happy Birthday" twice, using the images below<sup>3</sup>.



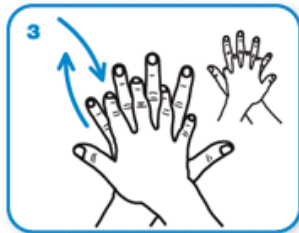
Wet hands with water



apply enough soap to cover all hand surfaces.



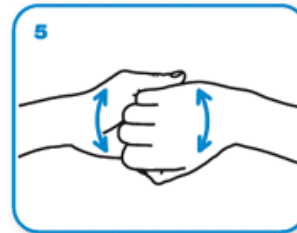
Rub hands palm to palm



right palm over left dorsum with interlaced fingers and vice versa



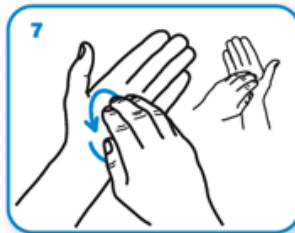
palm to palm with fingers interlaced



backs of fingers to opposing palms with fingers interlocked



rotational rubbing of left thumb clasped in right palm and vice versa



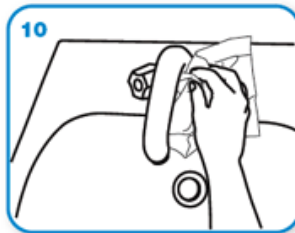
rotational rubbing, backwards and forwards with clasped fingers of right hand in left palm and vice versa.



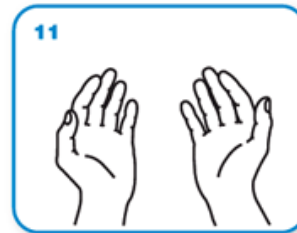
Rinse hands with water



dry thoroughly with a single use towel



use towel to turn off faucet



...and your hands are safe.

